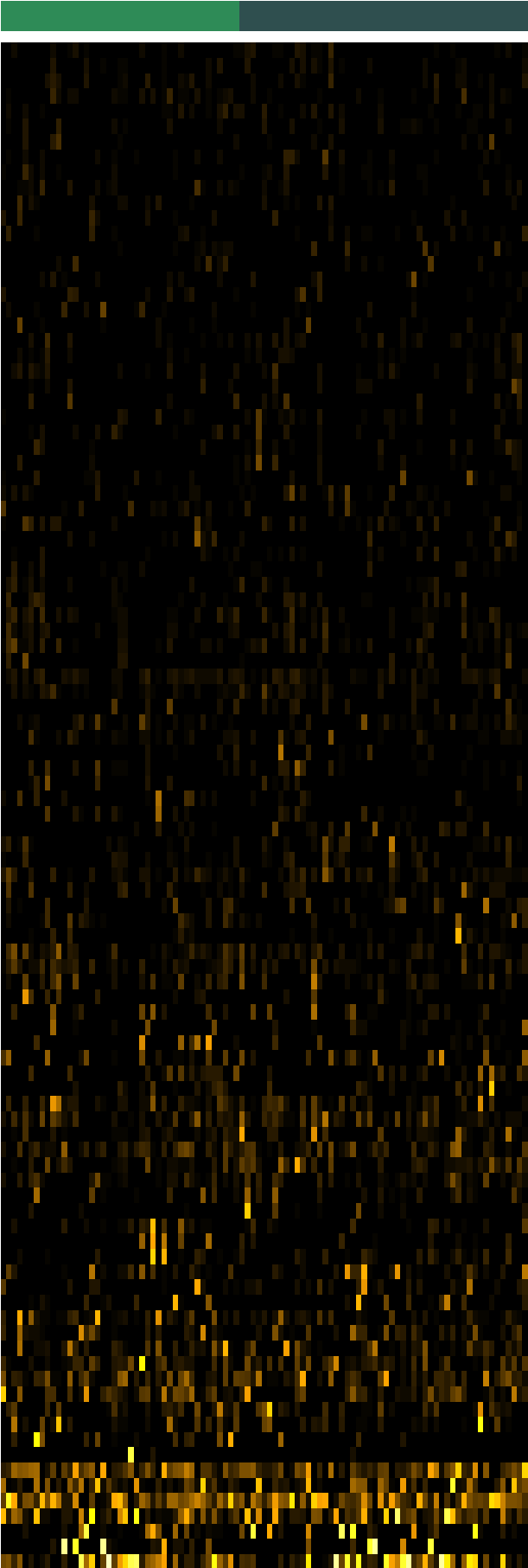
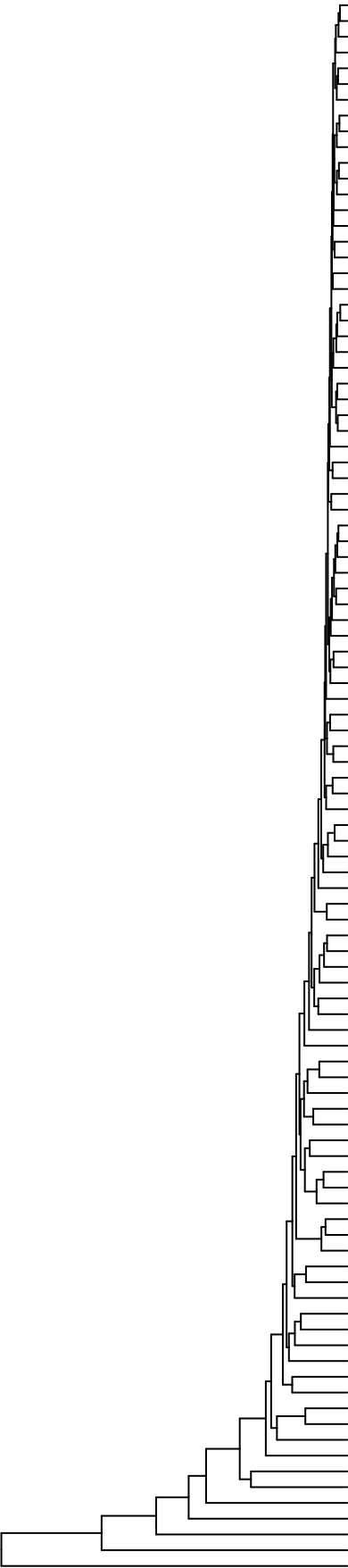


Compare  
Smoker 12 Weeks P2  
DUS+OSS 12 Weeks P2



- Prevotella oulorum  
Prevotella melaninogenica  
Stomatobaculum longum  
Oribacterium sp.\_HMT\_078  
Prevotella sp.\_HMT\_300  
Peptostreptococcus stomatis  
Veillonellaceae\_[G-1] bacterium\_HMT\_155  
Tannerella forsythia  
Mogibacterium timidum  
Bacteroidales\_[G-2] bacterium\_HMT\_274  
Porphyromonas pasteri  
Gemella haemolysans  
Parvimonas sp.\_HMT\_110  
Streptococcus constellatus  
Bifidobacterium dentium  
Prevotella veroralis  
Aggregatibacter sp.\_HMT\_458  
Actinomyces sp.\_HMT\_175\_nov\_97.633%  
Corynebacterium durum  
Capnocytophaga leadbetteri  
Campylobacter showae  
Gemella morbillorum  
Prevotella loescheii  
Leptotrichia buccalis  
Capnocytophaga gingivalis  
Arachnia propionica  
Capnocytophaga sputigena  
Neisseria sicca  
Rothia aeria  
Prevotella pleuritidis  
Streptococcus salivarius  
Saccharibacteria\_(TM7)\_[G-1] bacterium\_HMT\_349  
Saccharibacteria\_(TM7)\_[G-1] bacterium\_HMT\_347  
Catonella morbi  
Actinomyces sp.\_HMT\_171  
Anaeroglobus geminatus  
Actinomyces sp.\_HMT\_170  
Treponema socranskii  
Saccharibacteria\_(TM7)\_[G-1] bacterium\_HMT\_346  
Alloprevotella tannerae  
Actinomyces sp.\_HMT\_525  
Campylobacter gracilis  
Selenomonas sputigena  
Prevotella intermedia  
Kingella oralis  
Lachnoanaerobaculum saburreum  
Peptidiphaga gingivicola  
Selenomonas noxia  
Capnocytophaga granulosa  
Leptotrichia hongkongensis  
Capnocytophaga endodontalis  
Rothia mucilaginosa  
Porphyromonas endodontalis  
Fusobacterium nucleatum\_subsp.\_vincentii  
Peptostreptococcaceae\_[XI][G-9] [Eubacterium]\_brachy  
Prevotella sp.\_HMT\_317  
Streptococcus oralis\_subsp.\_tigurinus\_clade\_070  
Schaalia sp.\_HMT\_180  
Schaalia meyeri  
Dialister invisus  
Prevotella oris  
Lancefieldella rimae  
Actinomyces sp.\_HMT\_897  
Scardovia wiggsiae  
Actinomyces viscosus\_nov\_95.849%  
Actinomyces naeslundii  
Streptococcus parasanguinis\_clade\_411  
Actinomyces dentalis  
Actinomyces israelii  
Prevotella denticola  
Parvimonas micra  
Streptococcus anginosus  
Veillonella parvula  
Leptotrichia wadei  
Granulicatella adiacens  
Lautropia mirabilis  
Streptococcus sanguinis\_nov\_97.727%  
Lancefieldella parvula  
Actinomyces naeslundii\_nov\_97.422%  
Actinomyces oris  
Streptococcus intermedius  
Actinomyces sp.\_HMT\_175  
Streptococcus sp.\_HMT\_064  
Streptococcus cristatus  
Haemophilus parainfluenzae  
Corynebacterium matruchotii  
Actinomyces sp.\_HMT\_169  
Streptococcus oralis  
Streptococcus gordonii  
Olsenella sp.\_HMT\_807  
Saccharibacteria\_(TM7)\_[G-5] bacterium\_HMT\_356  
Peptidiphaga sp.\_HMT\_183  
Ligilactobacillus salivarius  
Veillonella dispar\_parvula  
Streptococcus sanguinis  
Fusobacterium nucleatum  
Streptococcus mitis  
Actinomyces sp.\_HMT\_448  
Streptococcus mutans  
Rothia dentocariosa

Species

Samples